

# Regional work zone THAL

25'000 m<sup>2</sup> industrial zone for your company



balsthal

8 Laupersdorf

region  
thal





## The economic region Thal

Thal is part of the Solothurn economic region.

Excellent infrastructure, quick accessibility, favourable cost and well-trained staff characterise this area.

Numerous companies from the medical technology and precision industries are situated at the southern foot of the Jura range.

The Thal region has a proud industrial history. Companies from the metal, porcelain, paper, celluloid and plastic processing industries have already achieved world fame with top products since the 19th century. At the moment, small, innovative businesses with their entrepreneurial and inventor spirit characterise the fine industrial and commercial location.

As part of the Mittelland economic area, the valley is just a few minutes' drive from the A1 motorway and the railway line at the southern base of the Jura range.

More recently, our region of the pioneers has also positioned itself as an innovative location for housing, work and leisure. As the first regional nature park in Switzerland, the Thal region has taken a leading role.

This innovative collaboration is also evident in Regional work zone THAL, which was jointly developed by the municipalities of Balsthal and Laupersdorf.

In the valley, you will find the ideal environment for your company. Let yourself be convinced of the advantages.

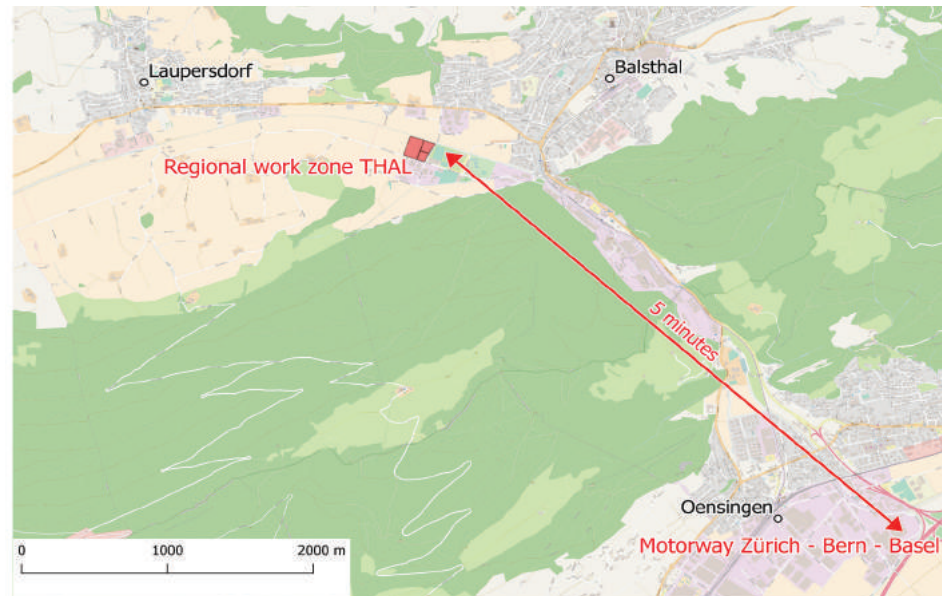
### Contact Person

Region Thal Ines Kreinacke  
General manager  
Hölzlistrasse 57  
CH-4710 Balsthal  
+41 62 386 12 49  
[Ines.Kreinacke@regionthal.ch](mailto:Ines.Kreinacke@regionthal.ch)





## The Thal region - centrally and quickly accessible



### By car

Motorway connection  
Zürich - Basel - Bern 5 minutes

Zürich 60 minutes  
Zürich Airport 60 minutes

Bern 40 minutes  
Bern-Belp Airport 50 minutes

Basel 40 minutes  
Basel Airport 45 minutes

Solothurn 20 minutes

Grenchen Airport 25 minutes

### By public means of transport

60 minutes  
70 minutes

80 minutes  
130 minutes

60 minutes  
80 minutes

25 minutes

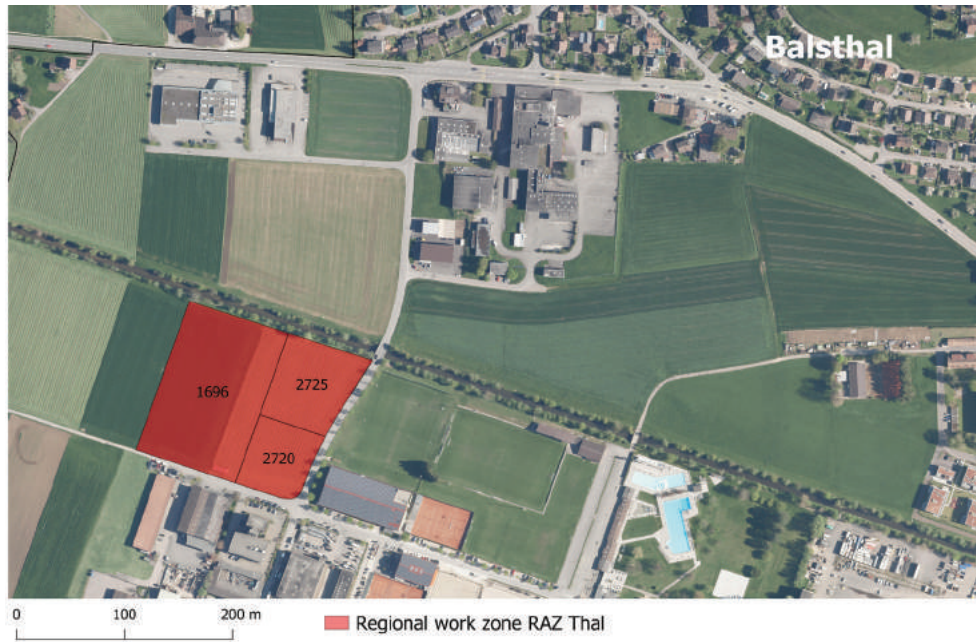
45 minutes

### Precise Location

The plot with level terrain lies between the municipalities of Balsthal and Laupersdorf. Up to now, it has been used as an agricultural area and however, there is no pollution caused by prior emissions.

The Zürich-Basel-Olten motorway is just 10 minutes away. Within a range of 1 hour driving time live about 2 million inhabitants, in the 9 municipalities of the region Thal approximately 14'500.

# 25'000 m<sup>2</sup> of industrial space for your company



## Building and planning legal framework

Zone allocation:	industrial zone
Building regulations:	Storey number: free Building height max. 15m Building length: unlimited Green area min. 10% Superstructure number max. 90%
Suitability:	Industrial, commercial and service enterprises with high workplace density
Availability:	immediately

## Your advantages

- Well developed, level plot
- Central location between Zürich, Basel and Bern
- Well-trained specialists from all sectors
- Favourable price level
- Nearby recreational leisure facilities such as outdoor swimming pool, indoor swimming pool, tennis courts and bowling.
- Location in the nature park provides the best conditions for an adjusted work-life balance

## What makes this property so special

- Large, contiguous plot of 25'000 m<sup>2</sup>
- For innovative companies, the location offers the opportunity to be inspired by nature, by the atmosphere in the valley and by the numerous leisure activities nearby.
- Innovation is lived daily in the valley.
- The establishment of the first Swiss natural park as a model region for sustainable development was and still is very innovative.
- Innovative cooperation between municipalities in many areas, such as education, spatial planning, tourism, business, culture and youth work.
- Innovative is the Energy City label, which the valley has received as one of the few regions in Switzerland.

## Short Profile Economic Area Solothurn - Olten -

An intersection point of the major motorways of Switzerland lies in this area. An important hub of the Swiss and European rail network is located in Olten. About one third of the Swiss population live close to the workplace - probably the largest labour market in Switzerland with a moderate price level.

### Region Thal

Provides 4,000 jobs in approximately 400 companies.

### Price level Industrial and commercial space

Significantly cheaper in comparison to areas in Solothurn, Olten and Oensingen.

### Wage level

In manufacturing, for example, about 11% cheaper than in the Zürich area.

### Availability of specialists

Highly qualified, loyal specialists. The regional work zone is well connected to public transport.

### Research, development and education

The universities and technical colleges in Zürich, Basel and Bern can be reached within an hour.

The University of Applied Sciences and Arts, Northwestern Switzerland (FHNW) with locations in Olten, Brugg, Solothurn and Windisch can be reached in less than an hour.

### Living

The cost of housing in the valley is much cheaper than in the middle country. The unique location in the nature park with its many high-quality leisure facilities offers everything for a perfect work-life balance.

### For more information, see

[www.standortsolothurn.ch](http://www.standortsolothurn.ch)

[www.balsthal.ch](http://www.balsthal.ch)

[www.laupersdorf.ch](http://www.laupersdorf.ch)

[www.naturparkthal.ch](http://www.naturparkthal.ch)

[www.regionthal.ch](http://www.regionthal.ch)

## Successful in the economic region Thal - a small selection

AEK Pellets AG - Manufacture of wood pellets

Allenspach Medical - Medicinal products

Bader Holzbau AG

Bimbosan - Baby nutrition

Business + Design AG - Marketing

Candino Watch - Watch industry

ChemValve Schmid - Fittings

Dyhrberg AG - Salmon smoking

Dynasol - Facades and windows

Glaeser Mümliswil AG - Veneer and surface technology

Jomos Gruppe - Complete provider of technical fire protection

Meier+Brunner AG - Carpentry

Nachbur AG - Precision engineering

Omya (Schweiz) AG - Omya Food

Protex AG - Professional protective clothing

PWF Kunststofftechnik - Plastic technology

Seilerei Berger GmbH - Ropes for industry, agriculture etc.

Sempione - Meat processing

Swiss Quality Paper - Paper factory

Synthes Produktions GmbH, medical technology

Synetronics - Printed circuit boards and electronic assemblies

Taufer AG (Strahlwerk Klus) - Sandblasting technology

Vogt AG Tableaubau - Electric controls







## Naturpark Thal – Living and working together in a unique way

The Thal Nature Park is for many Swiss practically on the doorstep. It can be reached within 1 hour from Zurich, Basel and Berne. Unobstructed Jura hills with fantastic panoramic views, vertically sloping gorges and canyons offer adventure and pure relaxation. With more than 200 years of comb, ceramic and watch industry, it also has a unique industrial history, which various museums showcase in a lively way.

The Nature Park Thal is one of the first of its kind in Switzerland and was given the label "Regional Natural Park of National Importance" in 2010. The aim of the Natural Park is to preserve and strengthen the unique natural and landscape values, as well as to promote sustainable economic activity and gentle tourism.

The Thal region, with its century-old industrial tradition, combines state-of-the-art companies, land to grow and a unique nature.



Stille Natur.  
Lebendiges Thal.